



2019 Project Review Sheet (2020 Construction)

City Council District 6 (Ballot # 6B)

Project #	19-231
Project Title:	Add crosswalk
Location:	Neighborhood: Ballard, 98107 Area: North side of the intersection at 14th Ave NW and NW 56th St

SDOT Contact Information

SDOT Reviewer Name: Carter Danne
Reviewer Phone Number: (206) 684-0817
Review Date: August 9th, 2019

SDOT Project Summary

SDOT approves project

- Yes
 Yes, with revisions
 No

Comments: Since pedestrian volumes do not warrant a marked crosswalk, SDOT recommends adding a refuge area, adding an ADA compliant curb ramp, and formalizing the restricted parking areas on the approach of the intersection to improve pedestrian visibility.

There is an opportunity to partner with another program:

- Yes
 No

Partnering Program: Traffic Spot Improvements

Total Project Cost: \$100,000

YVYC 2019: Project 19-231, North side of the intersection at 14th Ave NW and NW 56th St



Solution and Comments:

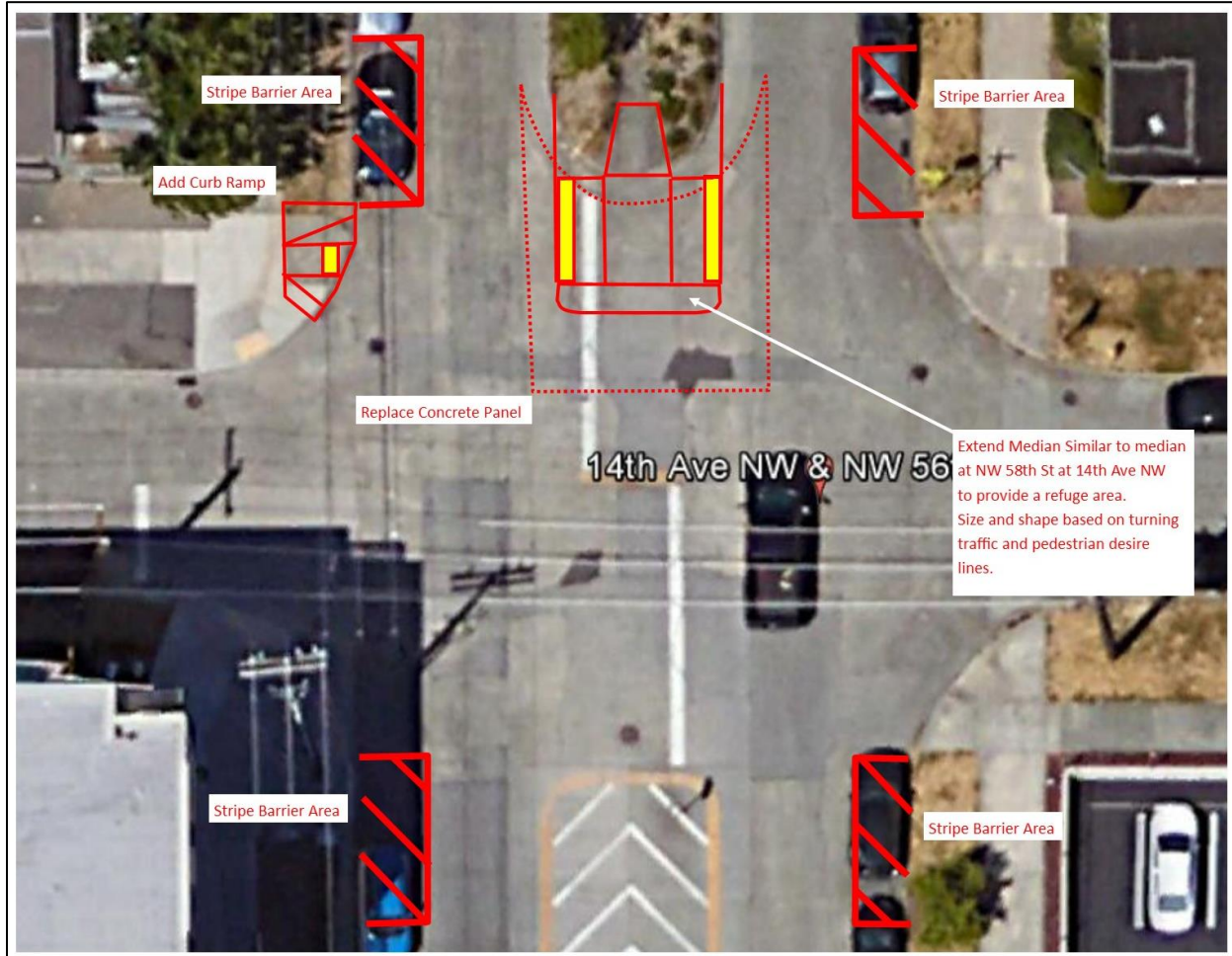
This review has been completed for use in the 2019 Your Voice, Your Choice: Parks & Streets process.

This project would:

- Extend the median south for pedestrian refuge
- Add striped barriers to narrow the travel width of the lanes on 14th Ave NW and to provide a buffer for pedestrians crossing
- Add a new curb ramp at the northwest corner to facilitate east/west pedestrian travel
- Replace a broken concrete panel in the pedestrian path



Image:



YVYC 2019: Project 19-231, North side of the intersection at 14th Ave NW and NW 56th St



Information Provided by Community Members

Project Idea: Crosswalk at 14th Ave NW and NW 56th St

Need for Project: Many pedestrians leave Ballard Market to walk home along NW 56th St, and it's difficult to cross here because cars are traveling fast and parked cars on both sides of the street make it harder to see when it is safe to cross. Walking down to Market St to cross at the light is out of the way for those carrying groceries. Drivers in Washington are often not aware that pedestrians are allowed to cross at unmarked crosswalks, and this crosswalk would increase safety for everyone at this intersection.

Community Benefit from Project: Neighbors who shop at Ballard Market, residents of the AVA apartment, pedestrians using the path in the center island on 14th Ave to get to Gemenskap Park, and anyone who walks along NW 56th St as a quieter alternative to walking on Market St

YVYC 2019: Project 19-231, North side of the intersection at 14th Ave NW and NW 56th St



Risk Registry

SDOT Review	Drainage impacts	Constructability	Community process
Low	Medium	Medium	Low

Cost Estimate

Design Phase	
Preliminary Engineering (Survey) Costs	\$1,000
Project Management Costs (City Labor)	\$2,000
Design Costs (Consultant Fees, if externally designed, internal labor otherwise)	\$8,000
Subtotal - Design Phase Costs	\$11,000
Design Contingency (10% of Design Phase Subtotal)	\$1,000
Total Design Phase Costs	\$12,000
Construction Phase	
Construction Costs (include urban forestry, signs & markings, traffic control, layout or construction staking as necessary)	\$55,000
Drainage Costs	\$9,000
Estimating Contingency (10-20%)	\$6,000
Subtotal - Construction Costs	\$70,000
Construction Management (10-25% of Construction Cost)	\$6,000
Construction Contingency (20%)	\$12,000
Total Construction Phase Costs	\$88,000
Total Project Cost = Total Design and Construction Phase Costs	\$100,000

YVYC 2019: Project 19-231, North side of the intersection at 14th Ave NW and NW 56th St